



...  verona®

RANGE, OVEN & COOKTOP COLLECTION • • •

BRING *Italy* HOME



EuroChef USA is the national importer of Fine European and Internationally recognized appliance brands including the Verona® brand of quality cooking appliances.

The EuroChef family offers innovative Italian crafted ranges, built-in ovens and cooktops that provide professional cooking experiences through exquisitely designed pieces. EuroChef USA has been distributing quality European appliances that are both durable and beautiful since 2001.

Our mission at EuroChef is to provide product excellence and customer service of the highest quality and value. We strive to continue delivering friendly service on a timely basis with a sense of personal pride to our customers.

EuroChef is proud to offer the Verona collection of classically designed Italian appliances to North American consumers. The Verona collection has been designed and manufactured in the suburbs of Venice, Italy since 1958 with standards of quality unsurpassed in the industry. Verona ranges, ovens and cooktops offer professional cooking and luxury that enhance the beauty and quality of kitchens everywhere.

PRODUCTS, FEATURES, ACCESSORIES & SPECIFICATIONS

36" Ranges	04
Features of a Verona Range	10
36" Classic Ranges	12
36" Range Options & Accessories	17
Chefs Pak	19
30" Ranges	20
24" Ranges	24
Built-in Ovens	25
110V Built-in Ovens	30
Gas Cooktops	32
Electric Cooktops	36
12" Cooktop Collection	38
Product Specifications	39



RANGES

In the true Italian artisan tradition, Verona gives you the best Pro Style residential range. High efficiency sealed gas burners deliver pinpoint accuracy and flame control as the burner heads are mounted close to the cooking surface to deliver better heat transfer and distribution. High output double and triple ring burners provide even heat across the bottom of the cooking utensil. As a result, foods cook quickly with less fuel than standard burners.

All Verona Ranges are equipped with a flame failure safety device which shuts off the gas flow in the event the flame is extinguished. This safety feature is not found on domestic models but is standard equipment on all Verona ranges. European convection ovens with a third fan element pre-heat the circulated air in the oven cavity to achieve consistent temperatures with no flavor transfer for superlative results.



36" DOUBLE OVEN DUAL FUEL RANGE



VEFSGE365NDE - Matte Black

Available in:



VEFSGE365NDW
White



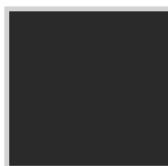
VEFSGE365NDAW
Antique White



VEFSGE365NDBU
Burgundy



VEFSGE365NDSS
Stainless Steel



VEFSGE365NDE
Matte Black

PRODUCT SPECIFICATIONS ON PAGE 39



FEATURES

- » 5 Sealed, high btu gas burners
- » Electronic Ignition
- » Flame failure safety device
- » Cast-iron burner grates and caps
- » Chrome knobs and handles
- » EZ clean porcelain oven cavities
- » 4 Heavy duty oven racks
- » Full width storage compartment

UNIQUE FEATURES

- » 2 True European convection ovens
- » Multi function programmable oven
- » Touch control digital clock & timer



2" high extended depth backguard included.
3" and 8" standard depth also available.

ACCESSORIES

- » Broiler pan (INCLUDED)
- » Grill Pan (INCLUDED)
- » Cast iron wok ring (INCLUDED)
- » LP kit (INCLUDED)
- » Tubular stainless steel handles (OPTIONAL)
- » EZ Glide rolling rack - large oven (OPTIONAL)



36" SINGLE OVEN DUAL FUEL RANGE

FEATURES

- » 5 Sealed, high btu gas burners
- » Electronic Ignition
- » Flame failure safety device
- » Cast-iron burner grates and caps
- » Chrome knobs and handle
- » EZ clean porcelain oven cavity
- » 2 Heavy duty oven racks
- » Full width storage compartment

UNIQUE FEATURES

- » True European convection oven
- » Multi function programmable oven
- » Touch control digital clock & timer



Programmable Digital Clock and Timer

ACCESSORIES

- » Broiler pan (INCLUDED)
- » Cast iron wok ring (INCLUDED)
- » LP kit (INCLUDED)
- » Tubular stainless steel handle (OPTIONAL)
- » EZ Glide rolling rack (OPTIONAL)



VEFSGE365NSS - Stainless Steel

Available in:



VEFSGE365NW
White



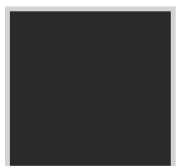
VEFSGE365NAW
Antique White



VEFSGE365NBU
Burgundy



VEFSGE365NSS
Stainless Steel



VEFSGE365NE
Matte Black

PRODUCT SPECIFICATIONS ON PAGE 39



36" DOUBLE OVEN GAS RANGE



VEFSGG365NDAW - Antique White

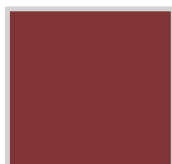
Available in:



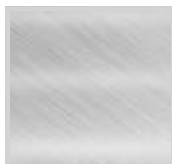
VEFSGG365NDW
White



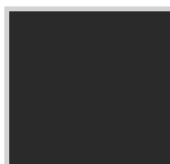
VEFSGG365NDAW
Antique White



VEFSGG365NDBU
Burgundy



VEFSGG365NDSS
Stainless Steel



VEFSGG365NDE
Matte Black

PRODUCT SPECIFICATIONS ON PAGE 39



FEATURES

- » 5 Sealed, high btu gas burners
- » Electronic Ignition
- » Flame failure safety device
- » Cast-iron burner grates and caps
- » Chrome knobs and handles
- » 60 Minute bell timer
- » EZ clean porcelain oven cavities
- » 4 Heavy duty oven racks
- » Full width storage compartment

UNIQUE FEATURES

- » Infrared broiler in each oven
- » Full-function convection ovens
- » Turbo-electric convection fan in each oven



Optional Tubular Handle

ACCESSORIES

- » Broiler pan (INCLUDED)
- » Grill Pan (INCLUDED)
- » Cast iron wok ring (INCLUDED)
- » LP kit (INCLUDED)
- » Tubular stainless steel handles (OPTIONAL)
- » EZ Glide rolling rack - large oven (OPTIONAL)



36" SINGLE OVEN GAS RANGE

FEATURES

- » 5 Sealed, high btu gas burners
- » Electronic Ignition
- » Flame failure safety device
- » Cast-iron burner grates and caps
- » Chrome knobs and handle
- » 60 Minute bell timer
- » EZ clean porcelain oven cavity
- » 2 Heavy duty oven racks
- » Full width storage compartment

UNIQUE FEATURES

- » Infrared broiler
- » Full-function convection oven
- » Turbo-electric convection fan



2" high extended depth backguard included.
3" and 8" standard depth also available.

ACCESSORIES

- » Broiler pan (INCLUDED)
- » Cast iron wok ring (INCLUDED)
- » LP kit (INCLUDED)
- » Tubular stainless steel handle (OPTIONAL)
- » EZ Glide rolling rack (OPTIONAL)



Available in:



VEFSGG365NW
White



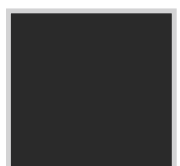
VEFSGG365NAW
Antique White



VEFSGG365NBU
Burgundy



VEFSGG365NSS
Stainless Steel



VEFSGG365NE
Matte Black

PRODUCT SPECIFICATIONS ON PAGE 39



36" SINGLE OVEN ELECTRIC RANGE

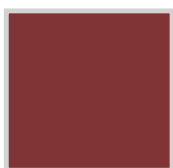


VEFSEE365SS - Stainless Steel

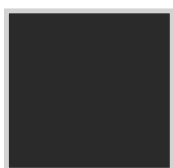
Available in:



VEFSEE365SS
Stainless Steel

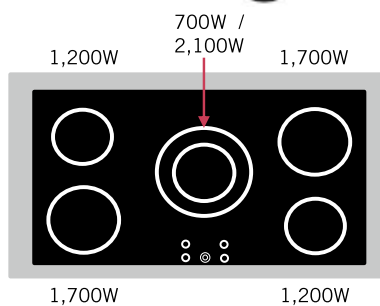


VEFSEE365BU
Burgundy



VEFSEE365E
Matte Black

PRODUCT SPECIFICATIONS ON PAGE 39



FEATURES

- » 5 Sealed, powerful elements
- » 1 Dual element
- » Black ceramic glass cooktop
- » Chrome knobs and handle
- » EZ Clean porcelain oven cavity
- » 2 Heavy duty racks
- » Full width storage compartment

UNIQUE FEATURES

- » True European convection oven
- » Multi function programmable oven
- » Touch control digital clock & timer



Black Ceramic Glass Cooktop



Optional Tubular Handle

ACCESSORIES

- » Broiler pan (INCLUDED)
- » Tubular stainless steel handle (OPTIONAL)
- » EZ Glide rolling rack (OPTIONAL)





Standard Features of a Verona Range

Verona appliances embody the quality, authenticity and tradition that make Italian cooking loved the world over. The professional performance of Verona finds a perfect fit in any kitchen. Verona ranges come in a multiple of sizes and are available in gas, electric and dual-fuel options. Verona ranges also come in multiple configurations – single oven, double oven – and a variety of colors. Plus, Verona is the only brand to offer side-by-side double ovens in a 36-inch range.



Unique Features of a Verona Classic Range

The Verona Classic Collection incorporates all of the same technical features as the original Verona series with a new, stylized look and high-end upgrades. Verona Classic is a new series of 36" professional ranges with contemporary lines and details that combine the very best of industrial design and cooking performance. Offered in stainless steel, matte black and gloss red, the Verona Classic models feature a sleek plinth leg, matching colored control panel, exquisite beveled front plus stainless handles and handrail.



36" CLASSIC DOUBLE OVEN DUAL FUEL RANGE

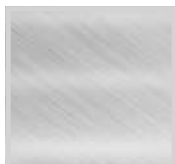


VCLFSGE365DSS - Stainless Steel

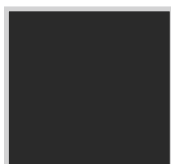
Available in:



VCLFSGE365DR
Gloss Red



VCLFSGE365DSS
Stainless Steel



VCLFSGE365DE
Matte Black

PRODUCT SPECIFICATIONS ON PAGE 39



FEATURES

- » Cast-iron grates and caps
- » Electronic ignition
- » Flame failure safety device
- » 5 Sealed gas burners
- » Multi-function electronic programmable ovens
- » European convection ovens with element
- » EZ Clean porcelain oven surface
- » 3 Heavy duty oven racks (1 LARGE/2 SMALL)
- » 1 EZ Glide rolling rack (LARGE OVEN)
- » Digital clock and timer
- » Full width storage compartment

UNIQUE FEATURES

- » Stainless steel tubular handles
- » Upper handrail
- » Color matched control panel
- » Beveled doors
- » Plinth legs



Programmable Digital Clock and Timer

ACCESSORIES

- » Broiler pan (INCLUDED)
- » Cast iron wok ring (INCLUDED)
- » LP kit (INCLUDED)

36" CLASSIC SINGLE OVEN DUAL FUEL RANGE



FEATURES

- » Cast-iron grates and caps
- » Electronic ignition
- » Flame failure safety device
- » 5 Sealed gas burners
- » Multi-function electronic programmable oven
- » European convection oven with element
- » EZ Clean porcelain oven surface
- » 1 Heavy duty oven rack
- » 1 EZ Glide rolling rack
- » Digital clock and timer
- » Full width storage compartment

UNIQUE FEATURES

- » Stainless steel tubular handle
- » Upper handrail
- » Color matched control panel
- » Beveled door
- » Plinth legs



2" high extended depth backguard included.
3" and 8" standard depth also available.

ACCESSORIES

- » Broiler pan (INCLUDED)
- » Cast iron wok ring (INCLUDED)
- » LP kit (INCLUDED)



VCLFSGE365E - Matte Black

Available in:



VCLFSGE365R
Gloss Red



VCLFSGE365SS
Stainless Steel



VCLFSGE365E
Matte Black

PRODUCT SPECIFICATIONS ON PAGE 39



36" CLASSIC DOUBLE OVEN GAS RANGE

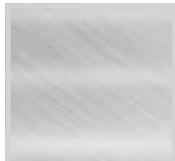


VCLFSGG365DSS - Stainless Steel

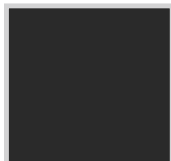
Available in:



VCLFSGG365DR
Gloss Red



VCLFSGG365DSS
Stainless Steel



VCLFSGG365DE
Matte Black

PRODUCT SPECIFICATIONS ON PAGE 39



FEATURES

- » Cast-iron grates and caps
- » Electronic ignition
- » Flame failure safety device
- » 5 Sealed gas burners
- » Turbo-electric convection fan in each oven
- » EZ Clean porcelain oven surface
- » 3 Heavy duty oven racks (1 LARGE/2 SMALL)
- » 1 EZ Glide rolling rack (LARGE OVEN)
- » Infrared broiler in each oven
- » Bell timer
- » Full width storage compartment

UNIQUE FEATURES

- » Stainless steel tubular handles
- » Upper handrail
- » Color matched control panel
- » Beveled doors
- » Plinth legs



2" high extended depth backguard included.
3" and 8" standard depth also available.

ACCESSORIES

- » Broiler pan (INCLUDED)
- » Cast iron wok ring (INCLUDED)
- » LP kit (INCLUDED)



36" CLASSIC SINGLE OVEN GAS RANGE



FEATURES

- » Cast-iron grates and caps
- » Electronic ignition
- » Flame failure safety device
- » 5 Sealed gas burners
- » Turbo-electric convection fan
- » EZ Clean porcelain oven surface
- » 1 Heavy duty oven rack
- » 1 EZ Glide rolling rack
- » Infrared broiler
- » Bell timer
- » Full width storage compartment

UNIQUE FEATURES

- » Stainless steel tubular handle
- » Upper handrail
- » Color matched control panel
- » Beveled door
- » Plinth legs



EZ Glide rolling rack included.

ACCESSORIES

- » Broiler pan (INCLUDED)
- » Cast iron wok ring (INCLUDED)
- » LP kit (INCLUDED)



VCLFSGG365R - Gloss Red

Available in:



VCLFSGG365R
Gloss Red



VCLFSGG365SS
Stainless Steel



VCLFSGG365E
Matte Black

PRODUCT SPECIFICATIONS ON PAGE 39

36" CLASSIC SINGLE OVEN ELECTRIC RANGE

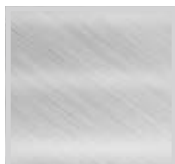


VCLFSEE365SS - Stainless Steel

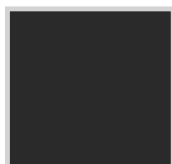
Available in:



VCLFSEE365R
Gloss Red

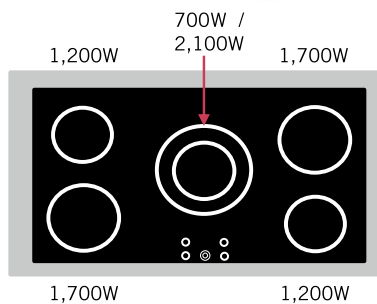


VCLFSEE365SS
Stainless Steel



VCLFSEE365E
Matte Black

PRODUCT SPECIFICATIONS ON PAGE 39



FEATURES

- » 5 Sealed, powerful elements
- » 1 Dual element
- » Black ceramic glass cooktop
- » EZ Clean porcelain oven cavity
- » 1 Heavy duty oven rack
- » 1 EZ Glide rolling rack
- » Full width storage compartment
- » True European convection oven
- » Multi function programmable oven
- » Touch control digital clock & timer

UNIQUE FEATURES

- » Stainless steel tubular handle
- » Upper handrail
- » Color matched control panel
- » Beveled Door
- » Plinth legs



Black Ceramic Glass Cooktop



EZ Glide rolling rack included.

ACCESSORIES

- » Broiler pan (INCLUDED)



36" RANGE OPTIONS & ACCESSORIES

Customize the Verona 36" Range to make a range perfect for any kitchen.

BODY STYLE



Classic

N Series

FUEL TYPE



Dual Fuel

All Gas

Electric

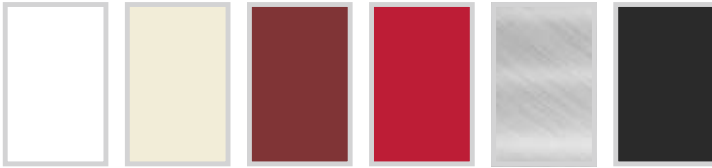
OVEN CONFIGURATION



Single Oven

Double Oven
(not available for electric)

COLORS



White

Antique White

Burgundy

Gloss Red
(Classic only)

Stainless Steel

Matte Black

**Classic ranges available only in: Gloss Red, Stainless Steel and Matte Black*

HANDLES



Traditional Handle

Classic Handle
(Classic only)

Tubular Handle
*(N series only)
(Optional)*

BACKGUARD OR ISLAND TRIM



Included Extended Depth 2-inch
Adds 1 7/8" to the overall depth of the range for a total depth of 25 5/8"



8-inch Standard Depth
For installation against a combustible wall



3-inch Standard Depth
Perfect for a narrow island installation



4-inch Extended Depth Matte Black Backguard
For a stylish alternative to stainless steel

LEG OPTIONS



Tubular



Plinth
(Classic only)



Matte Black
Wrap-around Toe-kick

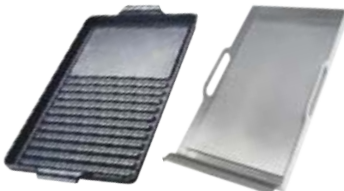


Stainless Steel
Wrap-around Toe-kick

ACCESSORIES



Cutting Board



Cast Iron
Grill / Griddle

Stainless Steel
Griddle



Cast Iron Wok Ring



Simmer Ring



Small Pot Reducer



EZ Glide Rolling Rack
(included with Classic ranges)



Photo Courtesy, Shanna Dean, Seattle Home Enhancement

verona[®] **CHEFS PAK**



Stainless Steel Griddle



Cutting Board to fit inside Griddle



Verona Oven Mitt



Half Tray Steamer Pan
(Base, Steamer & Cover)



Meat Probe



3" x 5" Beveled Spatula



BRING *Italy* HOME

30" SELF CLEANING DUAL FUEL RANGE



VEFSGE304PSS - Stainless Steel
(Available only in stainless steel)



FEATURES

- » 4 Sealed gas burners
- » Electronic Ignition
- » Flame failure safety device
- » Cast-iron burner grates and caps
- » Chrome knobs and handles
- » Easy clean enamel coated oven
- » Programmable digital clock and timer
- » 2 Heavy duty oven racks

UNIQUE FEATURES

- » Pyrolytic self cleaning function
- » 2 Dual ring 700-17K btu burners
- » True European convection oven
- » Thermostatically controlled warming drawer



Programmable Digital Clock & Timer



Thermostatically Controlled Warming Drawer

ACCESSORIES

- » Broiler pan (INCLUDED)
- » LP kit (INCLUDED)
- » Extended depth backguard (OPTIONAL)

PRODUCT SPECIFICATIONS ON PAGE 40



30" ALL GAS RANGE

FEATURES

- » 4 Sealed gas burners
- » Electronic Ignition
- » Flame failure safety device
- » Cast-iron burner grates and caps
- » Chrome knobs and handle
- » Easy clean enamel coated oven
- » 2 Heavy duty oven racks
- » 60 minute mechanical timer
- » Full width drop down storage

UNIQUE FEATURES

- » 2 Dual ring 700-17K btu burners
- » Thermostatic gas oven
- » Infrared broiler

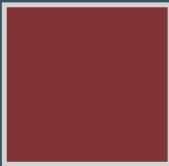
ACCESSORIES

- » Broiler pan (INCLUDED)
- » LP kit (INCLUDED)
- » EZ Glide rolling racks (OPTIONAL)
- » Extended depth backguard (OPTIONAL)

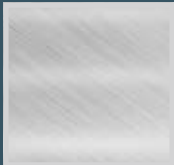
Available in:



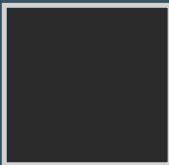
VEFSGG304NAW
Antique White



VEFSGG304NBU
Burgundy



VEFSGG304NSS
Stainless Steel



VEFSGG304NE
Matte Black



VEFSGG304NSS - Stainless Steel

PRODUCT SPECIFICATIONS ON PAGE 40



30" SELF CLEANING ELECTRIC RANGE



VEFSEE304PSS - Stainless Steel
(Available only in stainless steel)

PRODUCT SPECIFICATIONS ON PAGE 40

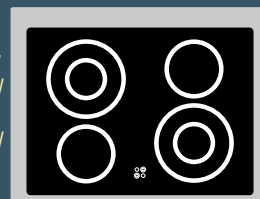


FEATURES

- » 4 Sealed elements
- » 2 Dual elements
- » Black ceramic glass top
- » Hot surface indicator light
- » Chrome knobs and handles
- » Self cleaning
- » Digital clock and timer
- » Multi function electronic programmable oven
- » European convection oven with element
- » 2 Heavy duty oven racks
- » Thermostatically controlled warming drawer

700W /
2,100W

1,200W



1,200W

700W /
2,100W



Thermostatically Controlled Warming Drawer

ACCESSORIES

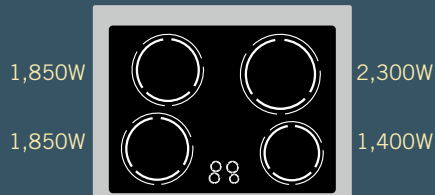
- » Broiler pan (INCLUDED)
- » Extended depth backguard (OPTIONAL)



30" SELF CLEANING INDUCTION RANGE

FEATURES

- » 4 High power zones
- » Black ceramic glass top
- » Hot surface indicator light
- » Chrome knobs and handles
- » Self cleaning
- » Digital clock and timer
- » Multi function electronic programmable oven
- » European convection oven with element
- » 2 Heavy duty oven racks
- » Thermostatically controlled warming drawer



Programmable Digital Clock & Timer

ACCESSORIES

- » Broiler pan (INCLUDED)
- » Extended depth backguard (OPTIONAL)



Induction technology offers the fastest and most responsive cooking surface available. It is also the most child safe, because the surface heats only when activated by metal, and the glass does not heat like a traditional electric burner.



VEFSIE304PSS - Stainless Steel
(Available only in stainless steel)



24" GAS RANGE



VEFSGG244NSS - Stainless Steel

24" SELF CLEANING ELECTRIC RANGE



VEFSEE244PSS - Stainless Steel

PRODUCT SPECIFICATIONS ON PAGE 40



RANGE FEATURES

- » 4 Sealed gas burners
- » Electronic ignition
- » Flame failure safety device
- » Cast-iron burner grates and caps
- » Chrome knobs and handles
- » Turbo-electric convection fan
- » Infrared broiler
- » EZ clean porcelain oven cavity

- » 2 Heavy duty oven racks
- » 60 minute mechanical timer
- » Full width storage drawer

ACCESSORIES

- » Broiler pan
- » Cast iron wok ring
- » LP kit
- » 2" Island trim (OPTIONAL)



RANGE FEATURES

- » Ceran Top with 4 radiant elements
- » Dual element 2100/700W
- » Chrome knobs and handles
- » Pyrolytic self cleaning electric oven
- » Multi function European convection oven with element
- » Digital clock and timer
- » Thermostatically controlled warming drawer

ACCESSORIES

- » Broiler pan
- » 2" Island trim (OPTIONAL)

BUILT-IN OVEN COLLECTION

Italian made Verona Ovens give the look, feel and performance you seek for your professional-style kitchen. Every unit perfectly combines old-world European technology with modern advantages. Whether you want one oven or the convenience of two, Verona ovens deliver every time. Easy to read controls and simple operation gets you cooking in no time.



ELECTRIC BUILT-IN OVENS

30" SELF CLEANING OVENS

Innovation and style come together in this exclusive collection. Twelve preset cooking functions, versatile self clean and a powerful convection mode combine for peak performance.



TOUCH CONTROL

panel for the digital clock and timer and cooking mode selection. Enjoy complete control of oven settings with the touch of a finger.



DUAL CONVECTION

fans operate simultaneously for the perfect distribution of heat within the oven cavity.



4.1 CUBIC FOOT CAPACITY OVENS



4 PANE GLASS DOORS

offer a cool touch surface for safety and assist with insulation to maintain oven temperature.



TELESCOPIC RACKS

are fully retractable for convenient accessibility. One rack included with each oven. Two sets included with double oven.

30" ELECTRIC SELF CLEANING DOUBLE OVEN



VEBIEM3030DSS - Stainless Steel

OVEN FEATURES

- » Electronic controls with intuitive and easy access to the oven's cooking functions
- » Pyrolytic self cleaning with auto door latch
- » 12 Cooking functions including "Pizza" mode
- » Stainless knobs & handles
- » True European convection ovens – 2 fans & 2 elements in each oven
- » Cool door – 4 pane heat resistant glass
- » Heavy duty rack in each oven - 6 positions (INCLUDED)

ACCESSORIES

- » Meat probe - upper oven (INCLUDED)
- » Telescopic gliding racks (INCLUDED - 1 IN EACH OVEN)

30" x 30" ELECTRIC SELF CLEANING WALL OVEN



VEBIEM3030SS - Stainless Steel

OVEN FEATURES

- » Electronic controls with intuitive and easy access to oven's cooking functions
- » Pyrolytic self cleaning with auto door latch
- » 12 Cooking functions including "Pizza" mode
- » Stainless steel knobs & handle
- » True European convection oven – 2 fans and 2 elements
- » Cool door – 4 pane heat resistant glass
- » Heavy duty rack – 6 positions (INCLUDED)

ACCESSORIES

- » Meat probe (INCLUDED)
- » Telescopic gliding rack (INCLUDED)

PRODUCT SPECIFICATIONS ON PAGE 41

30" x 24" ELECTRIC SELF CLEANING WALL OVEN



VEBIEM3024SS - Stainless Steel

This **UNIQUELY** sized built-in oven delivers first-class performance, featuring:

- 2.8 Cu. Ft. Capacity
- True European Convection
- 8 Cooking Functions
- Electronic Controls

** Telescopic racks are available as an optional accessory.*

ADDITIONAL FEATURES

- » Pyrolytic self cleaning with auto door latch
- » Stainless steel knobs & handle
- » Cool door – 3 pane heat resistant glass
- » 2 Heavy duty racks – 4 positions (INCLUDED)

PRODUCT SPECIFICATIONS ON PAGE 41



Optional Stacking Kit for 24" & 30" Ovens

VESKE24 - Stacking Kit for VEBIE24P / VEBIG24*

VESKM30 - Stacking Kit for 30" Oven*

* Adds 1 3/4" to Cutout



24" GAS WALL OVEN

This Verona Exclusive Oven is packed with power, and is perfect for a small space kitchen. All the benefits of electric in an ALL GAS unit, featuring:

- 2 Cu. Ft. Capacity
- Infrared Broiler
- Instant Electronic Ignition
- Flame Failure Safety
- 60 Minute Bell Timer
- EZ Clean Porcelain Oven Cavity

* Optional stacking kit VESKE24 is available for vertical stacking.

ADDITIONAL FEATURES

- » Chrome knobs and handle
- » 2 Heavy duty racks
- » Broiler pan (INCLUDED)

PRODUCT SPECIFICATIONS ON PAGE 41



VEBIG24NE - Matte Black
VEBIG24NSS - Stainless Steel

24" ELECTRIC SELF CLEANING WALL OVEN

Perfectly sized for small space kitchens, featuring:

- 2 Cu. Ft. Capacity
- Multi function & Programmable
- European Convection Oven
- Touch Control Digital Clock And Timer
- Automatic Door Latch

* Optional stacking kit VESKE24 is available for vertical stacking.

ADDITIONAL FEATURES

- » Pyrolytic self cleaning electric oven
- » Chrome knobs and handle
- » 2 Heavy duty racks
- » Broiler pan (INCLUDED)

PRODUCT SPECIFICATIONS ON PAGE 41



VEBIE24PSS - Stainless Steel

30" x 24" 110 VOLT ELECTRIC WALL OVEN



VEBIEM301SS - Stainless Steel

All of the benefits of a 220V in an exclusive 110V version, featuring:

- 350° Pre-heat in 20 Minutes
- 2.8 Cu. Ft. Capacity
- 1900 Watt Output
- Cool Touch 3 Pane Glass Doors
- 8 Cooking Functions
- Electronic Controls

** Telescopic gliding racks are available as an optional accessory.*

Verona offers the perfect solution when 220V electric is not available. The 110V built-in oven only requires 20 Amp service but performs with all of the power needed for professional results.



**350° Pre-heat
in 20 Minutes**

ADDITIONAL FEATURES

- » Convection fan
- » Stainless steel handle & chrome knobs
- » 2 Heavy duty racks - 4 positions (INCLUDED)

PRODUCT SPECIFICATIONS ON PAGE 41



**20 amp dedicated circuit
recommended for 110V ovens**

24" x 24" 110 VOLT ELECTRIC WALL OVEN



VEBIEM241SS - Stainless Steel

All of the benefits of a 220V in an exclusive 110V version, featuring:

- 350° Pre-heat in 16 Minutes
- 2.2 Cu. Ft. Capacity
- 1900 Watt Output
- Cool Touch 3 Pane Glass Doors
- 8 Cooking Functions
- Electronic Controls

** Telescopic gliding racks are available as an optional accessory.*

Verona offers the perfect solution when 220V electric is not available. The 110V built-in oven only requires 20 Amp service but performs with all of the power needed for professional results.



**350° Pre-heat
in 16 Minutes**

ADDITIONAL FEATURES

- » Convection fan
- » Stainless steel handle & chrome knobs
- » 2 Heavy duty racks - 4 positions (INCLUDED)

PRODUCT SPECIFICATIONS ON PAGE 41



**20 amp dedicated circuit
recommended for 110V ovens**

COOKTOP COLLECTION

Italian-made Verona Cooktops are stylish, functional and affordable with sizes and fuel options to accommodate any kitchen. High efficiency sealed burners with high btu output that allow for optimum heat transfer and distribution are standard on all gas models. Each gas model is beautifully designed and finished with cast iron burner grates and caps and the highest quality stainless steel surface. Electric cooktops, available in both Radiant and Induction, utilize the latest in cooking technology with updates such as touch controls, rapid boil settings and easy to control power settings.

All cooktops offer Flexibility, Performance and Style perfect for any space.



DESIGNER SERIES

GAS COOKTOPS

A uniquely designed collection constructed with a heavy duty Stainless Steel Surface. With cast iron grates, burner caps and Stainless Steel Knobs, these cooktops are built for style and performance. Available in 44", 36", 30" and 24" sizes

Featuring a Powerful Dual Burner that can also be reduced to a low level simmer



**Front Controls • Electronic Ignition & Re-Ignition • Stainless Steel Surface & Knobs
Power Burner 20K Tested, 18K Rated btu's • Simmer 400 btu's**



..... OPTIONAL ACCESSORIES



Wok Ring



Simmer Plate



Small Pot Reducer

36" 5 BURNER GAS COOKTOP



VECTGM365SS

COOKTOP FEATURES

- » 5 sealed burners
- » Electronic ignition and re-ignition
- » Dual ring power burner
- » Cast iron burner grates and caps
- » LP kit (INCLUDED)



Dual Burner

The Verona Designer Series uses a dual-flame European-style sealed burner to deliver a wide range of burner output - 18,000 btu's for meat searing and wok cooking, down to 400 btu's for melting chocolate and locking in flavors.

Applicable to all of the Designer Series models.

30" 5 BURNER GAS COOKTOP



VECTGM305SS

COOKTOP FEATURES

- » 5 sealed burners
- » Electronic ignition and re-ignition
- » Dual ring power burner
- » Cast iron burner grates and caps
- » LP kit (INCLUDED)



Semi Sealed Burner

Designed with only two removable parts, our sealed burners keep spills from leaking inside the cooktop.

Applicable to all of the Designer Series models.

44" 4 BURNER GAS COOKTOP



VECTGM424SS

COOKTOP FEATURES

- » 4 sealed burners
- » Electronic ignition and re-ignition
- » Dual ring power burner
- » Cast iron burner grates and caps
- » LP kit (INCLUDED)

24" 4 BURNER GAS COOKTOP



VECTGM244SS

COOKTOP FEATURES

- » 4 sealed burners
- » Electronic ignition and re-ignition
- » Dual ring power burner
- » Cast iron burner grates and caps
- » LP kit (INCLUDED)

PRODUCT SPECIFICATIONS ON PAGE 42

GAS COOKTOPS

The Verona Gas Cooktop collection offers peak performance with high btu sealed burners. Each model is beautifully designed and finished with cast iron burner grates and caps and a stainless steel surface. Available in 36", 30" & 24" sizes.

Beautiful European design allows for maximized surface space and the flexibility to place large pots across several burners.

Heavy Duty Cast Iron Grates • Stainless Steel Surface & Knobs

..... OPTIONAL ACCESSORIES



Wok Ring



Simmer Plate



Small Pot Reducer

(OPTIONAL ACCESSORIES NOT AVAILABLE FOR 24" GAS COOKTOPS)

36" 5 BURNER GAS COOKTOP



VECTGV365SS - Stainless Steel

COOKTOP FEATURES

- » 5 sealed burners
- » Electronic ignition and re-ignition
- » Cast iron burner caps and grates
- » LP kit (INCLUDED)
- » Small pot reducer (INCLUDED)



Semi Sealed Burner

Designed with only two removable parts, our sealed burners keep spills from leaking inside the cooktop

36" 5 BURNER GAS COOKTOP SIDE CONTROL



VECTGMS365SS - Stainless Steel

COOKTOP FEATURES

- » 5 sealed burners
- » 18,500 btu dual ring power burner
- » Electronic ignition and re-ignition
- » Cast iron burner caps and grates
- » LP kit (INCLUDED)
- » Small pot reducer (INCLUDED)

PRODUCT SPECIFICATIONS ON PAGE 42

30" 4 BURNER GAS COOKTOP



VECTGV304SS - Stainless Steel

COOKTOP FEATURES

- » 4 sealed burners
- » Electronic ignition and re-ignition
- » Cast iron burner caps and grates
- » LP kit (INCLUDED)
- » Small pot reducer (INCLUDED)



Semi Sealed Burner

Designed with only two removable parts, our sealed burners keep spills from leaking inside the cooktop

30" SIDE CONTROL GAS COOKTOP



VECTGMS304SS - Stainless Steel

COOKTOP FEATURES

- » 4 sealed burners
- » Electronic ignition and re-ignition
- » Cast iron burner caps and grates
- » LP kit (INCLUDED)
- » Small pot reducer (INCLUDED)

24" DELUXE GAS COOKTOP



VEGCT424FSS - Stainless Steel

COOKTOP FEATURES

- » 4 sealed burners
- » Electronic ignition
- » Front control knobs - chrome
- » Porcelainized cast-iron grates & caps
- » Flame failure safety device
- » LP kit (INCLUDED)

PRODUCT SPECIFICATIONS ON PAGE 42



ELECTRIC COOKTOPS

Radiant Smooth Surface

Enjoy quick and reliable performance with sealed elements on a ceramic cooking surface. Precision cooking is easy with fast boil, automatic power reduction and low temperature control. Available in 36" and 30" sizes.



Triple Ring Element
2500/1600/800 W



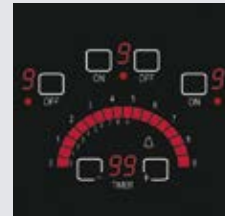
Dual Ring Element
2,200/800W



Bridge Element
800W
Connects front
& back elements
(36" only)



Radiant Heating
Elements provide quick
and evenly distributed
heat for more
consistent cooking.



Electronic Controls
A "Peacock" tail control
bar for fine-tuning
temperature settings
and timer function.



Aluminum Frame
A sophisticated
aluminum frame
surrounds a smooth,
easy-to-clean black
ceramic surface

36" 5 ELEMENT ELECTRIC RADIANT COOKTOP



VECTEM365

COOKTOP FEATURES

- » Slide touch controls for power setting
- » "Peacock Tail" bar for power indication
- » 5 Digital power level displays
- » Low temperature control for delicate cooking
- » Command lock
- » Automatic fast boil function
- » Hot surface & residual heat indicator
- » Timer functions & display

30" 4 ELEMENT ELECTRIC RADIANT COOKTOP



VECTEM304

COOKTOP FEATURES

- » Slide touch controls for power setting
- » "Peacock Tail" bar for power indication
- » 4 Digital power level displays
- » Low temperature control for delicate cooking
- » Command lock
- » Automatic fast boil function
- » Hot surface & residual heat indicator
- » Timer functions & display

PRODUCT SPECIFICATIONS ON PAGE 43

ELECTRIC COOKTOPS

Induction

Verona INDUCTION cooktop offers the power and control of gas with the speed of radiant cooking - the best of both worlds. The state-of-the-art "Peacock" control with LED display allows you to go from a rapid boil setting to low-power with the touch of a finger. Available in 30" size.



The INDUCTION Advantage

High Efficiency - heat is transferred directly to the pot or pan, without loss of energy.

Reduced heating times - Induction is 30% to 50% faster compared with other cooking technology.

Safety - The system will only heat when cookware is present and cool down mere seconds after it is removed. A control lock prevents unintentional activation.

Standard Features:

- **BOOST Technology on Every Zone**
- **Sealed Elements**
- **Black Ceramic Surface with Aluminum Frame**
- **Hot Surface and Residual Heat Indication**

30" 4 ZONE ELECTRIC INDUCTION COOKTOP



VECTIM304

COOKTOP FEATURES

- » Slide touch controls for power setting
- » "Peacock Tail" bar for power indication
- » 4 Digital power level displays
- » Low temperature control for delicate cooking
- » Command lock
- » Booster / fast boil function
- » Timer functions & display

SPECIAL FEATURES

- » Pan detection system
- » Cooling fan system

PRODUCT SPECIFICATIONS ON PAGE 43



12 INCH COOKTOP COLLECTION

A collection of Gas and Electric options perfect for small space kitchens or for layering together with larger cooktop sizes for a custom configuration.



12" DELUXE GAS COOKTOP

COOKTOP FEATURES

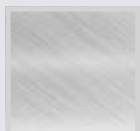
- » 2 sealed burners / front controls
- » 10K + 6K btu
- » Electronic ignition
- » Cast-iron burner grates and caps
- » Flame failure safety device
- » LP kit (INCLUDED)

ACCESSORIES

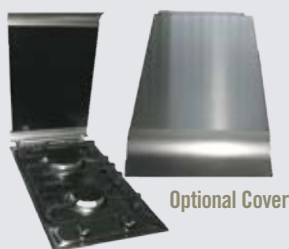
- » Cover (OPTIONAL)

VEGCT212FE - Black

Also available in:



VEGCT212FSS
Stainless Steel



Optional Cover



12" GAS COOKTOP

COOKTOP FEATURES

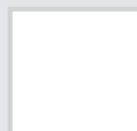
- » 2 sealed burners / front controls
- » 10K + 6K btu
- » Electronic ignition
- » Porcelain enameled burner grates and caps
- » LP kit (INCLUDED)

ACCESSORIES

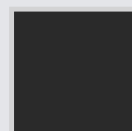
- » Cover (OPTIONAL)

VECTG212FDS - Stainless Steel

Also available in:



VECTG212FDW
White



VECTG212FDE
Black

PRODUCT SPECIFICATIONS ON PAGE 42



12" ELECTRIC CERAN COOKTOP

VEECT212FS (230 Volt)

COOKTOP FEATURES

- » Ceramic glass cooking surface
- » 1700W + 1200W elements
- » Stainless Steel frame
- » Front controls
- » Power "ON" indicator light
- » Residual heat warning indicator light



12" ELECTRIC CERAN COOKTOP

VEECT110VFSS (110 Volt)

COOKTOP FEATURES

- » Ceramic glass cooking surface
- » 1400W + 1000W elements
- » Stainless Steel frame
- » Front controls
- » Power "ON" indicator light
- » Residual heat warning indicator light

36" VERONA & VERONA CLASSIC

PROFESSIONAL STYLE RANGES		Model Number - Verona	VEFSGE365ND	VEFSGG365ND	VEFSGE365N	VEFSGG365N	VEFSEE365SS
		Model Number - Verona Classic	VCLSGE365D	VCLSGG365D	VCLSGE365	VCLSGG365	VCLSEE365SS
	GENERAL FEATURES	Size	36"	36"	36"	36"	36"
		Type	Dual Fuel	Gas	Dual Fuel	Gas	Electric
		Clock and Timer	Yes		Yes		Yes
		Bell Timer		Yes		Yes	
		Wok Ring	Yes	Yes	Yes	Yes	
		Control Knobs	Chrome	Chrome	Chrome	Chrome	Chrome
		Control Knobs - Classic	Nickel - Polymer Composite	Nickel - Polymer Composite	Nickel - Polymer Composite	Nickel - Polymer Composite	Nickel - Polymer Composite
		Colors	Stainless Steel, Matte Black, Burgundy, White, Antique White	Stainless Steel, Matte Black, Burgundy, White, Antique White	Stainless Steel, Matte Black, Burgundy, White, Antique White	Stainless Steel, Matte Black, Burgundy, White, Antique White	Stainless Steel, Matte Black, Burgundy
		Colors - Classic	Stainless Steel, Matte Black, Gloss Red	Stainless Steel, Matte Black, Gloss Red	Stainless Steel, Matte Black, Gloss Red	Stainless Steel, Matte Black, Gloss Red	Stainless Steel, Matte Black, Gloss Red
		Storage - Drop Down Door	Full Width	Full Width	Full Width	Full Width	Full Width
		Propane Conversion	Kit Included	Kit Included	Kit Included	Kit Included	
		3" Island Trim	Optional	Optional	Optional	Optional	Optional
	COOK TOP FEATURES	Power Requirements	120/240 Volt 60 Hz. 30 Amp	120 Volt 60 Hz. 15 Amp	120/240 Volt 60 Hz. 30 Amp	120 Volt 60 Hz. 15 Amp	120/240 Volt 60 Hz. 50 Amp
		Burners - Elements	5 Sealed	5 Sealed	5 Sealed	5 Sealed	5 Sealed
		LF	12,000 BTU	12,000 BTU	12,000 BTU	12,000 BTU	1,700 Watts
		RF	12,000 BTU	12,000 BTU	12,000 BTU	12,000 BTU	1,200 Watts
		Center	1,000-16,000 BTU	1,000-16,000 BTU	1,000-16,000 BTU	1,000-16,000 BTU	2,100 / 700 Watts
		LR	6,000 BTU	6,000 BTU	6,000 BTU	6,000 BTU	1,200 Watts
		RR	6,000 BTU	6,000 BTU	6,000 BTU	6,000 BTU	1,700 Watts
		Griddle	Optional	Optional	Optional	Optional	
		Flame failure safety device	Yes	Yes	Yes	Yes	
	MAIN OVEN FEATURES	Multi Function	Yes	Yes	Yes	Yes	Yes
		Oven Capacity (Cu. Ft.)	2.5	2.4	4.0	4.0	4.0
		Convection Fan	European	Yes	European	Yes	European
		Closed Door Broil	Yes	Yes	Yes	Yes	Yes
		Broiler	Yes	Infrared	Yes	Infrared	Yes
		Broiler Power	2,000 Watts	8,500 BTU	2,200 Watts	15,000 BTU	2,200 Watts
		Oven Power	2,400 Watts	13,000 BTU	3,300 Watts	21,000 BTU	3,300 Watts
		Convection Element	2,450 Watts	No	2,450 Watts	No	2,450 Watts
		Racks	2 Heavy Duty Pullout	2 Heavy Duty Pullout	2 Heavy Duty Pullout	2 Heavy Duty Pullout	2 Heavy Duty Pullout
		Racks - Classic	1 Glide Rack, 1 Pullout	1 Glide Rack, 1 Pullout	1 Glide Rack, 1 Pullout	1 Glide Rack, 1 Pullout	1 Glide Rack, 1 Pullout
		Broiler Pan	Yes	Yes	Yes	Yes	Yes
	SECOND OVEN FEATURES	Multi Function	Yes	Yes			
		Second Oven Cap. (Cu. Ft.)	1.5	1.5			
		Convection Fan	European	Yes			
		Closed Door Broil	Yes	Yes			
		Broiler	Yes	Infrared			
		Broiler Power	1,450 Watts	8,000 BTU			
		Oven Power	1,500 Watts	9,000 BTU			
		Convection Heater	2,450 Watts	N/A			
		Racks	2 Heavy Duty Pullout	2 Heavy Duty Pullout			
		Broiler (Grill) Pan	Yes	Yes			
	DIMENSIONS	Width (in)	35 7/8	35 7/8	35 7/8	35 7/8	35 7/8
		Height (in) - Tubular Leg	35 7/16 - 37 13/32	35 7/16 - 37 13/32	35 7/16 - 37 13/32	35 7/16 - 37 13/32	35 7/16 - 37 13/32
		Height (in) - Classic -Plinth	35 7/8 - 36 1/8	35 7/8 - 36 1/8	35 7/8 - 36 1/8	35 7/8 - 36 1/8	35 7/8 - 36 1/8
		Height (in) of Backguard	2 or 8	2 or 8	2 or 8	2 or 8	2
		Depth (in)	24	24	24	24	24
		Weight (lbs)	275	275	250	250	250

30" & 24" VERONA GAS, DUAL FUEL & ELECTRIC RANGES

Model Number		VEFSGG304N	VEFSGE304PSS	VEFSEE304PSS	VEFSIE304PSS	VEFSEE244P	VEFSGG244NNS
GENERAL FEATURES	Size	30"	30"	30"	30"	24"	24"
	Type	Gas	Dual Fuel	Electric	Induction	Electric	Gas
	Clock and Timer	No	Yes	Yes	Yes	Yes	No
	Bell Timer	Yes					Yes
	Wok Ring	Yes	Yes				Yes
	Control Knobs	Chrome	Chrome	Chrome	Chrome	Chrome	Chrome
	Colors	Stainless Steel	Stainless Steel	Stainless Steel	Stainless Steel	Stainless Steel	Stainless Steel
	Storage - Drop Down Door	Drop Down Storage	Warming Drawer	Warming Drawer	Warming Drawer	Warming Drawer	Pull Out Drawer
	Propane Conversion	Kit Included	Kit Included	N/A	N/A	N/A	Kit Included
	3" Island Trim	Optional	Optional	Optional	Optional	Optional	Optional
	Power Requirements	120 Volt	120/240 Volt	120/240 Volt	120/240 Volt	120/240 Volt	120 Volt
		60 Hz. 15 Amp	60 Hz. 30 Amp	60 Hz. 50 Amp	60 Hz. 50 Amp	60 Hz. 55 Amp	60 Hz. 15 Amp
COOK TOP FEATURES	Burners	4 Sealed	4 Sealed	Smooth Top	Smooth Top	Smooth Top	4 Sealed
	LF	700 - 17,000 BTU	700 - 17,000 BTU	1,200 Watts	1,850 Watts*	1,200 Watts	3,400 BTU
	RF	700 - 17,000 BTU	700 - 17,000 BTU	2,100 / 700 Watts	1,400 Watts*	1,700 Watts	12,000 BTU
	LR	8,000 BTU	8,000 BTU	2,100 / 700 Watts	1,850 Watts*	2,100/700 Watts	6,000 BTU
	RR	8,000 BTU	8,000 BTU	1,200 Watts	2,300 Watts*	1,200 Watts	6,000 BTU
	Griddle	Optional	Optional				Optional
	Flame failure safety device	Yes	Yes				Yes
MAIN OVEN FEATURES	Self Clean	No	Yes	Yes	Yes	Yes	No
	Multi Function	N/A	Yes	Yes	Yes	Yes	N/A
	Oven Capacity (Cu. Ft.)	3.6	3.6	3.6	3.6	2.0	2.5
	Convection Fan	Yes	European	European	European	European	Yes
	Closed Door Broil	Yes	Yes	Yes	Yes	Yes	Yes
	Broiler	Yes	Yes	Yes	Yes	Yes	Infrared
	Broiler Power	11,000 BTU	2,850 W	2,850 W	2,850 W	2,000 W	8,500 BTU
	Oven Power	14,000 BTU	2,950 W	2,950 W	2,950 W	2,800 W	13,000 BTU
	Convection Element	N/A	2,500 W	2,500 W	2,500 W	2,200 W	N/A
	Heavy Duty Racks	2	2	2	2	2	2
	Broiler Pan	Yes	Yes	Yes	Yes	Yes	Yes
WARMING DRAWER	Temperature Range		86° - 203°	86° - 203°	86° - 203°	85° - 250°	
	Humidity Control		No	No	No	Yes	
	Heavy Duty Racks		Reversible	Reversible	Reversible	Reversible	
	Oven Power		500W	500W	500W	500W	
	Capacity (cu. ft.)		1.7	1.7	1.7	0.6	
DIMENSIONS	Width (in)	29 7/8	29 7/8	29 7/8	29 7/8	23 7/8	23 7/8
	Height (in) w/o Backguard	35 5/8 - 36 5/16	35 5/8 - 36 5/16	35 5/8 - 36 5/16	35 5/8 - 36 5/16	35 7/32 - 36 7/32	35 7/16 - 36 7/32
	Height (in) of Backguard	3	3	3	3	4 7/16	4 7/16
	Depth (in)	24	24	24	24	24	24 1/8
	Weight (lbs)	260	260	250	250	200	185

* Maximum Power output when set for PowerBoost
 Zone 1 & 2 (LF & LR) - 2,500 W / Zone 3 (RR) - 3,700 W / Zone 4 (RF) - 1,800 W

30" & 24" ELECTRIC & GAS OVENS

Model Number		VEBIEM3030D	VEBIEM3030	VEBIEM3024	VEBIEM301	VEBIEM241	VEBIE24P	VEBIG24N
GENERAL FEATURES	Size	30" Double Oven	30" x 30"	30" x 24"	30" x 24"	24" x 24"	24" x 24"	24" x 24"
	Type	Electric	Electric	Electric	Electric - 110V	Electric - 110V	Electric	Gas
	Self Clean	Both Ovens	Yes	Yes	No	No	Yes	No
	Clock and Timer Display	Red LED Blue Backlight	Red LED Blue Backlight	Red LED	Red LED	Red LED	Green LED	Bell Timer
	Handle	Stainless Steel	Stainless Steel	Stainless Steel	Stainless Steel	Stainless Steel	Chrome	Chrome
	Control Knobs	Stainless Steel	Stainless Steel	Stainless Steel	Chrome	Chrome	Chrome	Chrome
	Colors	Stainless Steel	Stainless Steel	Stainless Steel	Stainless Steel	Stainless Steel	Stainless Steel	Stainless Steel, Matte Black
	Pre-Heat Bar	25%, 50%, 75%, 100%	25%, 50%, 75%, 100%	N/A	N/A	N/A	N/A	N/A
	Oven Doors	4 Pane Glass	4 Pane Glass	4 Pane Glass	3 Pane Glass	3 Pane Glass	3 Pane Glass	3 Pane Glass
	Automatic Fast Preheat	Yes	Yes	No	No	No	No	No
	Sabbath Mode	Yes	Yes	No	No	No	No	No
	Child Door Lock	Yes	Yes	No	No	No	No	No
	Control Panel	4 Knobs, 6 Touch Keys	2 Knobs, 6 Touch Keys	2 Knobs, Electronic Control	2 Knobs, 6 Touch Keys	2 Knobs, 6 Touch Keys	2 Knobs, 6 Touch Keys	3 Knobs
	Power Requirements	120/240 Volt	120/240 Volt	120/240 Volt	120 Volt	120 Volt	120/240 Volt	120 Volt
		60 Hz. 40 Amp	60 Hz. 20 Amp	60 Hz. 20 Amp	60 Hz. 20 Amp	60 Hz. 20 Amp	60 Hz. 20 Amp	60 Hz. 15 Amp
OVEN FEATURES	Oven Capacity (Cu. Ft.)	4.1 - Each Oven	4.1	2.8	2.8	2.0	2.0	2.0
	Multi Function	12 Cooking Functions	12 Cooking Functions	8 Cooking Functions	8 Cooking Functions	8 Cooking Functions	6 Cooking Functions	2 Cooking Functions
	Convection Fan	2 - European Each Oven	2 - European	European	Yes	Yes	Yes	No
	Cavity Lighting	3 x 20W - Halogen Each Oven	3 x 20W Halogen	2 x 20W Halogen	1 x 25W	1 x 25W	Yes	Yes
	Broiler	Yes	Yes	Yes	Yes	Yes	Yes	Infrared
	Broiler Power	3,500 W Each Oven	3,500W	3,100 W	1,800 W	1,800 W	2,000 W	7,000 BTU's
	Oven Power	3,000 W Each Oven	3,000 W	2,400 W	1,900 W	1,900 W	2,300 W	11,000 BTU's
	Convection Fan Element	2 x 1,300 W Each Oven	2 x 1,300 W	2,500 W	N/A	N/A	2,000 W	N/A
	Meat Probe	Upper Oven Only	Yes	No	No	No	No	No
	Heavy Duty Racks	1- Each Oven	1	2	2	2	2	2
	Telescopic Glide Rack	1 - Each Oven	1	Optional	Optional	Optional	N/A	N/A
DIMENSIONS	OVERALL							
	Width (in)	29 11⁄16	29 11⁄16	29 3⁄8	29 3⁄8	23 7⁄16	24	24
	Height (in)	50 3⁄4	27 7⁄8	23 3⁄16	23 3⁄16	23 3⁄16	24	24
	Depth (in)	24	24	23	23	23	23	23 5⁄8
	Weight (lb)	318	175	148	148	102	140	106
	CUT OUT							
	Width (in)	28 7⁄16	28 7⁄16	28	28	22 1⁄16	22 3⁄64	22
	Height (in)	49 3⁄4	27 1⁄4	23	23	23	23 1⁄32	23
Depth (in)	23 1⁄4	23 1⁄4	24	24	24	23	23	

DESIGNER SERIES GAS COOKTOPS

DESIGNER SERIES COOKTOPS	Model Number		VECTGM424SS	VECTGM365SS	VECTGM305SS	VECTGM244SS
	GENERAL FEATURES	Size	44"	36"	30"	24"
		Type	Gas	Gas	Gas	Gas
		Propane	Kit Included	Kit Included	Kit Included	Kit Included
		Control Knobs	Stainless Steel	Stainless Steel	Stainless Steel	Stainless Steel
		Colors	Stainless Steel	Stainless Steel	Stainless Steel	Stainless Steel
	BURNER FEATURES	Burners	4	5	5	4
		Power Burner (btu)	20k *	20k *	20k *	20k *
		Left Front (btu)	4,000	6,300	4,000	
		Right Front (btu)	15,000	4,000	6,300	4,000
		Center Burner (btu)	9,000	Power Burner		
		Left Rear (btu)		9,000	12,000	6,300
		Right Rear (btu)		12,000	9,000	12,000
		Grates and Caps	Cast Iron	Cast Iron	Cast Iron	Cast Iron
		Power Requirements	120 Volt 60 Hz. 15 Amp	120 Volt 60 Hz. 15 Amp	120 Volt 60 Hz. 15 Amp	120 Volt 60 Hz. 15 Amp
	DIMENSIONS	OVERALL				
		Width (in)	44	35 ¾	29 ⅞	24 ¾
		Height (in)	3	3	3	3
		Depth (in)	16 ¾	20 ⅞	20 ⅞	20 ⅞
		CUT OUT				
		Width (in)	43 ¼	35 ¾	29 ⅞	23 ½
		Depth (in)	16	19 ⅝	19 ⅝	19 ⅝

* 20k Tested, 18k rated

36" - 12" GAS COOKTOPS

COOKTOPS	Model Number		VECTGV365SS	VECTGMS365SS	VECTGV304SS	VECTGMS304SS	VEGCT424FS	VEGCT212F	VECTG212FD
	GENERAL FEATURES	Size	36"	36"	30	30	24"	12"	12"
		Type	Gas	Gas	Gas	Gas	Gas	Gas	Gas
		Propane	Kit Included	Kit Included	Kit Included	Kit Included	Kit Included	Kit Included	Kit Included
		Side / Front Control	Front	Side	Front	Side	Front	Front	Front
		Control Knobs	Stainless Steel	Stainless Steel	Stainless Steel	Stainless Steel	Chrome	Chrome	Chrome
		Color	Stainless Steel	Stainless Steel	Stainless Steel	Stainless Steel	Stainless Steel	SS, Black	SS, White, Black
	BURNER FEATURES	Burners	5	5	4	4	4	2	2
		Left Front (btu)	15,000	11,500	15,000	15,000	11,500		
		Right Front (btu)	12,000	3,500	9,000	6,300	3,500	12" Front Burner	12" Front Burner
		Center (btu)	9,000	18,500				6,000	6,000
		Left Rear (btu)	4,000	6,000	4,000	9,000	6,000	12" Rear Burner	12" Rear Burner
		Right Rear (btu)	12,000	6,000	12,000	12,000	6,000	10,000	10,000
		Grates and Caps	Cast Iron	Cast Iron	Cast Iron	Cast Iron	Cast Iron	Cast Iron	Porcelainized Cast Iron
		Continuous Grates	Yes	Yes	Yes	Yes	Yes	Yes	Yes
		Electronic Ignition & Re-Ignition	Yes	Yes	Yes	Yes	No	No	No
		Flame Failure Safety	No	No	No	No	Yes	Yes	No
		Power Requirements	120 Volt 60 Hz. 15 Amp	120 Volt 60 Hz. 15 Amp	120 Volt 60 Hz. 15 Amp	120 Volt 60 Hz. 15 Amp	120 Volt 60 Hz. 15 Amp	120 Volt 60 Hz. 15 Amp	120 Volt 60 Hz. 15 Amp
	DIMENSIONS	OVERALL							
		Width (in)	36 ¾	36	30 ¾	30	22 ⅞	11 ⅝	11 ⅝
		Height (in)	3	3	3	3	3	3	3
		Depth (in)	21	21	21	21	19 ⅞	20 ⅞	20 ⅞
		CUT OUT							
		Width (in)	34 ½	34 ½	28 ½	28 ½	22 ⅞	10 ⅞	10 ⅞
		Depth (in)	19 ⅞	19 ⅞	19 ⅞	19 ⅞	18 ⅞	19 ¼	19 ¼

ELECTRIC COOKTOPS

Model Number		VECTEM365	VECTEM304	VECTIM304	VEECT212	VEECT110
GENERAL FEATURES	Size	36"	30"	30"	12"	12"
	Type	Electric -Radiant	Electric -Radiant	Electric - Induction	Electric	Electric
	Frame	Aluminum	Aluminum	Aluminum		
	Control Knobs	Slide Touch	Slide Touch	Slide Touch	Chrome	Chrome
	Color - Surface	Black Ceramic Glass	Black Ceramic Glass	Black Ceramic Glass	VitroCeramic	VitroCeramic
BURNER FEATURES	Elements - Size/Power/Boost (W)	5	4	4	2	2
	Left Front (Watts)	7" - 1,800	6" - 1,200	6" - 1,200 /1,400 Boost	12" Front Burner	12" Front Burner
	Right Front (Watts)	7" - 1,800	6" - 1,200	6" - 1,200 /1,400 Boost	1,200	1,000
	Center (Watts)	9" / 7" / 5" 2,500 / 1,600 / 800				
	Bridge (Watts)	800				
	Left Rear (Watts)	6" - 1,200	9"/7"/5" - 2,500/1,600/800	8" - 2,200/3,000 Boost	12" Rear Burner	12" Rear Burner
	Right Rear (Watts)	7" - 1,800	8"/5" - 2,200/800	7" - 1,800/2,800 Boost	1,700	1,400
	Power Requirements	240 Volt	240 Volt	240 Volt	220 Volt	120 Volt
		60 Hz. 40 Amp	60 Hz. 30 Amp	60 Hz. 30 Amp	60 Hz. 20 Amp	60 Hz. 20 Amp
DIMENSIONS	OVERALL					
	Width (in)	36 ¼	30 7/16	30 7/16	11 5/16	11 5/16
	Height (in)	3 ¼	3 ¼	3 ¼	2	2
	Depth (in)	21 ¼	21 ¼	21 ¼	20 1/16	20 1/16
	CUT OUT					
	Width (in)	34 1/16	28 11/16	28 11/16	10 5/8	10 5/8
	Depth (in)	19 ½	19 ½	19 ½	19 ¼	19 ¼





***EuroChef* USA**

41 Mercedes Way, Suite 25, Edgewood, NY 11717 • PH: 631.254.3434 • FAX: 631.254.3426

www.eurochefusa.com



WARRANTY

All Verona Ranges, ovens and select cooktops are covered by a (2) two-year warranty for parts and labor. All 12-inch cooktops are covered by a (90) ninety day limited warranty. Verona products are not intended for commercial installation. Warranty is void in any commercial-type application. Changes to the product may have occurred after this catalogue was printed. Please obtain current installation information for your model before rough-ins and final installation. Check your local municipalities for installation codes.

Most areas require a licensed plumber or gas fitter and/or electrician for proper installation.



The information presented here is believed to be correct at the time of printing. However, specifications are subject to change without notice.